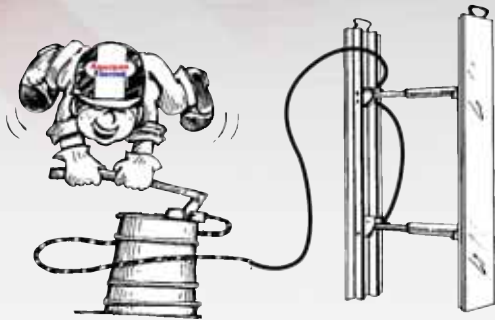


# Hydraulic Shoring

## Standard Vertical Shores



Pump with gauge, valve, hose and quick disconnect fittings. Pump's gauge regulated pressure insures evenly applied loads. Wire braided hoses are protected by spring guards.



## Installation and Removal from Above Ground

### INSTALLATION



Connect hydraulic hose line to fitting. Position shore at edge of trench.

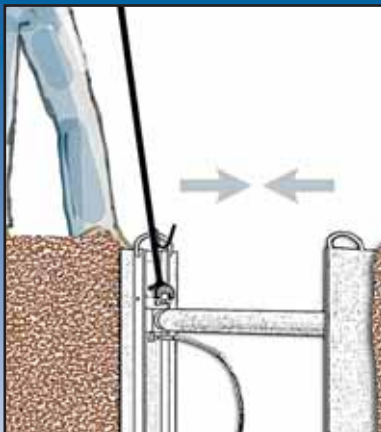


Lower shore into trench per O.S.H.A. requirements. Use release tool nearest to you and removal hook on far side.

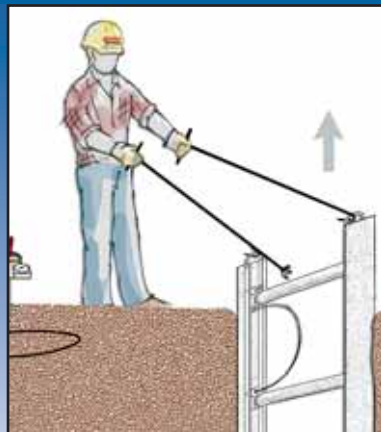


Pump to minimum pressure of 750 psi. Disconnect hose from fitting using the release tool.

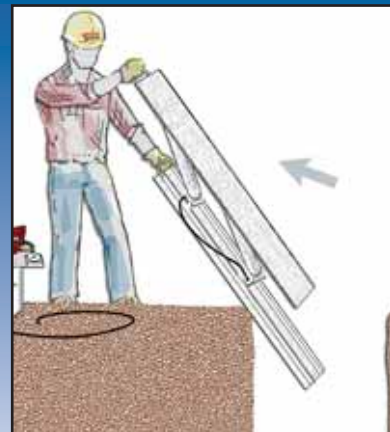
### REMOVAL



Release the shoring fluid at fitting using the release tool.



Remove the shoring assembly from trench using both release and removal hook.



Complete hydraulic shore assembly folds flat for portability to next location. Always keep fingers clear of pivot pump.

## STANDARD VERTICAL SHORE WITH 2" CYLINDER

MODEL	DESCRIPTION	CYL RANGE (MIN-MAX)	WEIGHT
<b>1.5' Vertical Shore Complete</b>			
2.1 ASV-01.5-17-27-HB	1.5' Vertical Shore 17-27 HB SR	17" - 27"	21#
2.1 ASV-01.5-22-36-HB	1.5' Vertical Shore 22-36 HB SR	22" - 36"	23#
2.1 ASV-01.5-28-46-HB	1.5' Vertical Shore 28-46 HB SR	28" - 46"	25#
2.1 ASV-01.5-34-55-HB	1.5' Vertical Shore 34-55 HB SR	34" - 55"	28#
2.1 ASV-01.5-40-64-HB	1.5' Vertical Shore 40-64 HB SR	40" - 64"	30#
2.1 ASV-01.5-52-88-HB	1.5' Vertical Shore 52-88 HB SR	52" - 88"	36#

<b>2' Vertical Shore Complete</b>			
2.1 ASV-02-17-27-HB	2' Vertical Shore 17-27 HB SR	17" - 27"	23#
2.1 ASV-02-22-36-HB	2' Vertical Shore 22-36 HB SR	22" - 36"	26#
2.1 ASV-02-28-46-HB	2' Vertical Shore 28-46 HB SR	28" - 46"	28#
2.1 ASV-02-34-55-HB	2' Vertical Shore 34-55 HB SR	34" - 55"	31#
2.1 ASV-02-40-64-HB	2' Vertical Shore 40-64 HB SR	40" - 64"	33#
2.1 ASV-02-52-88-HB	2' Vertical Shore 52-88 HB SR	52" - 88"	39#

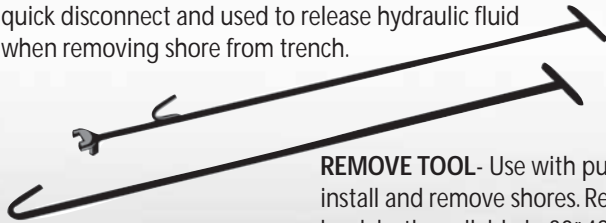
<b>3.5' Vertical Shore Complete</b>			
2.1 ASV-03.5-17-27-HB	3.5' Vertical Shore 17-27 HB SR	17" - 27"	44#
2.1 ASV-03.5-22-36-HB	3.5' Vertical Shore 22-36 HB SR	22" - 36"	50#
2.1 ASV-03.5-28-46-HB	3.5' Vertical Shore 28-46 HB SR	28" - 46"	55#
2.1 ASV-03.5-34-55-HB	3.5' Vertical Shore 34-55 HB SR	34" - 55"	60#
2.1 ASV-03.5-40-64-HB	3.5' Vertical Shore 40-64 HB SR	40" - 64"	68#
2.1 ASV-03.5-52-88-HB	3.5' Vertical Shore 52-88 HB SR	52" - 88"	77#

<b>5' Vertical Shore Complete</b>			
2.1 ASV-05-17-27-HB	5' Vertical Shore 17-27 HB SR	17" - 27"	55#
2.1 ASV-05-22-36-HB	5' Vertical Shore 22-36 HB SR	22" - 36"	60#
2.1 ASV-05-28-46-HB	5' Vertical Shore 28-46 HB SR	28" - 46"	65#
2.1 ASV-05-34-55-HB	5' Vertical Shore 34-55 HB SR	34" - 55"	70#
2.1 ASV-05-40-64-HB	5' Vertical Shore 40-64 HB SR	40" - 64"	77#
2.1 ASV-05-52-88-HB	5' Vertical Shore 52-88 HB SR	52" - 88"	87#

<b>7' Vertical Shore Complete</b>			
2.1 ASV-07-17-27-HB	7' Vertical Shore 17-27 HB SR	17" - 27"	65#
2.1 ASV-07-22-36-HB	7' Vertical Shore 22-36 HB SR	22" - 36"	70#
2.1 ASV-07-28-46-HB	7' Vertical Shore 28-46 HB SR	28" - 46"	75#
2.1 ASV-07-34-55-HB	7' Vertical Shore 34-55 HB SR	34" - 55"	80#
2.1 ASV-07-40-64-HB	7' Vertical Shore 40-64 HB SR	40" - 64"	89#
2.1 ASV-07-52-88-HB	7' Vertical Shore 52-88 HB SR	52" - 88"	97#

Hollow Rod Available Upon Request At No Additional Charge

**RELEASE TOOL**- permits above trench release of quick disconnect and used to release hydraulic fluid when removing shore from trench.



**REMOVE TOOL**- Use with pump and release tool to install and remove shores. Release tool and removal hook both available in 30", 48" and 100" lengths.

### ACCESSORIES

MODEL	DESCRIPTION	WEIGHT
AS-RELEASE TOOL-30	30" Release Tool	5#
AS-REMOVAL TOOL-30	30" Removal Hook	3#
AS-RELEASE TOOL-48	48" Release Tool	7#
AS-REMOVAL TOOL-48	48" Removal Hook	5#
AS-RELEASE TOOL-96	96" Release Tool	13#
AS-REMOVAL TOOL-96	96" Removal Hook	10#



### HYDRAULIC PUMPS

MODEL	DESCRIPTION
A-1000	HYDRAULIC PUMP- STEEL
A-2000	HYDRAULIC PUMP- PLASTIC

### HIGH PRESSURE HOSES

MODEL	DESCRIPTION
AS-H-37	SHORT HOSE FOR 37" OR 39"
AS-H5-9	LONG HOSE 59"

### HYDRAULIC PUMPS- PARTS

MODEL	DESCRIPTION
AS-HP-1	Bushing 3/8" X 1/4"
AS-HP-2 1/4"	Check Valve
AS-HP-3	Brass Cross
AS-HP-4	Crimp On Hose Ends
AS-HP-5 1/4"	Turn Valve
AS-HP-6	Female Disconnect
AS-HP-7	Brass Hose Barb
AS-HP-11	90 Degree Elbow (Brass)
AS-HP-12	Plunger & Rod
AS-HP-13	Bracket Cover
AS-HP-14	Tube Assembly
AS-HP-15	Tube
AS-HP-16	Lever
AS-HP-17	Brass Female
AS-HP-18	Air water hose red PVC
AS-HP-19	Push lock barb male pipe
AS-HP-20	Push lock barb female pipe
AS-HP-21	Tube nut brass..
AS-HP-22	Tube Nut
AS-HP-23	90 Degree Female Elbow
AS-HP-24	Bulk Head Male Connector W/LN
AS-HP-31	Pump Container
AS-HP-GASKET	Gasket
AS-HP-PLATE	Pump Can Face Plate
AS-HP-Pump	Assembly Pump Assembly
AS-HP-RK	Pump Repair Kit
AS-GAUGE	Pump Gauge

**AMERICAN SHORING INC.**

1.800.407.4674  
www.americanshoring.com