

High Strength Trench Shields

High Strength Steel
Trench Shields
Available in 6" and 8"
Single and double wall



- ★ Quality, high strength steel construction 6', 8', 10', 12' heights - lengths to 40'
- ★ Certified for deep cuts
- ★ Reinforced bottom cutting edges and anti-wear bar standard
- ★ Utilizes pinned in place pipe spreaders
- ★ Lifting lugs
- ★ Height adapter available
- ★ Optional full front cutting edges
- ★ Stackable
- ★ Foam fill (optional)
- ★ Professional Engineer Certified

6" MEDIUM DUTY DOUBLE WALL

MODEL	HEIGHT	LENGTH	WEIGHT	APPROXIMATE DIGGING DEPTH (FT.) & SOIL TYPE			
				A	B	C	C
				25	45	60	80
6SDW412	4'	12'	3100#	102	71	54	42
6SDW416	4'	16'	4500#	90	50	38	29
6SDW420	4'	20'	5375#	55	32	24	19
6SDW424	4'	24'	6450#	38	22	17	13
6SDW426	4'	26'	6700#	34	20	16	12
6SDW612	6'	12'	4500#	92	60	48	40
6SDW616	6'	16'	5950#	86	49	37	29
6SDW620	6'	20'	7100#	54	31	24	18
6SDW624	6'	24'	8350#	38	23	18	15
6SDW626	6'	26'	9000#	33	18	14	11
6SDW812	8'	12'	6400#	84	42	35	2
6SDW816	8'	16'	7700#	69	40	30	24
6SDW820	8'	20'	9300#	57	32	24	19
6SDW824	8'	24'	10675#	37	22	18	14
6SDW826	8'	26'	11500#	32	19	14	9
6SDW1016	10'	16'	9150#	76	42	32	24
6SDW1020	10'	20'	11050#	57	33	26	20
6SDW1024	10'	24'	12990#	40	24	19	15
6SDW1026	10'	26'	13825#	32	21	14	11

8" MEDIUM DUTY DOUBLE WALL

MODEL	HEIGHT	LENGTH	WEIGHT	APPROXIMATE DIGGING DEPTH (FT.) & SOIL TYPE			
				A	B	C	C
				25	45	60	80
8SDW412	4'	12'	3250#	112	104	82	68
8SDW416	4'	16'	4875#	98	77	58	49
8SDW420	4'	20'	5875#	85	63	51	43
8SDW424	4'	24'	6875#	66	51	43	39
8SDW426	4'	26'	7350#	52	46	36	32
8SDW428	4'	28'	7850#	49	38	30	23
8SDW612	6'	12'	4650#	112	87	62	46
8SDW616	6'	16'	6850#	99	66	50	39
8SDW620	6'	20'	8275#	74	43	34	26
8SDW624	6'	24'	9675#	51	30	23	19
8SDW626	6'	26'	10500#	43	26	20	16
8SDW628	6'	28'	12300#	38	23	18	15
8SDW812	8'	12'	7200#	102	67	39	35
8SDW816	8'	16'	8750#	80	48	36	30
8SDW820	8'	20'	10575#	66	40	31	25
8SDW824	8'	24'	12375#	52	30	24	18
8SDW826	8'	26'	13400#	45	26	20	16
8SDW828	8'	28'	14300#	40	24	19	15
8SDW1016	10'	16'	10800#	97	60	46	35
8SDW1020	10'	20'	13100#	80	47	37	29
8SDW1024	10'	24'	15000#	56	34	27	22
8SDW1026	10'	26'	16500#	47	29	23	18
8SDW1028	10'	28'	17600#	42	26	21	16





36' LONG HEAVY DUTY TRENCH BOX WITH AVENGER STYLE END CLOSURE PLATES



SUPER Double Wall
SHOWN WITH FIVE (5) PIPE SPREADER SYSTEM

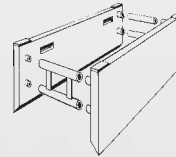


SUPER Double Wall
SHOWN WITH FOUR (4) PIPE SPREADER SYSTEM. "H" STYLE BRACKETS PERMIT STACKING AND LOCKING OF BOXES TOGETHER. STACKING TUBES ALSO AVAILABLE.

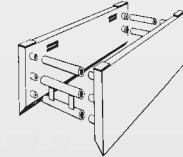
MODEL	HEIGHT	LENGTH	WEIGHT	APPROXIMATE DIGGING DEPTH (FT.) & SOIL TYPE			
				A	B	C	C
				25	45	60	80
6SDW416H	4' 16'	5255#	99	70	53	41	
6SDW420H	4' 20'	6319#	77	44	33	25	
6SDW424H	4' 24'	7383#	53	31	23	18	
6SDW616H	6' 16'	7133#	102	71	54	42	
6SDW620H	6' 20'	8650#	79	45	34	26	
6SDW624H	6' 24'	10168#	54	31	24	19	
6SDW626H	6' 26'	10927#	46	27	21	16	
6SDW628H	6' 28'	11634#	40	23	18	14	
6SDW816H	8' 16'	9009#	93	54	41	32	
6SDW820H	8' 20'	10981#	76	44	34	26	
6SDW824H	8' 24'	12952#	55	32	25	20	
6SDW826H	8' 26'	13938#	47	28	22	17	
6SDW828H	8' 28'	14852#	41	24	19	15	
6SDW1016H	10' 16'	10886#	86	50	39	30	
6SDW1020H	10' 20'	13311#	70	41	32	25	
6SDW1024H	10' 24'	15737#	55	33	26	21	
6SDW1026H	10' 26'	16950#	48	29	23	18	
6SDW1028H	10' 28'	18070#	41	25	20	16	

MODEL	HEIGHT	LENGTH	WEIGHT	APPROXIMATE DIGGING DEPTH (FT.) & SOIL TYPE			
				A	B	C	C
				25	45	60	80
8SDW416H	4' 16'	5830#	99	93	70	53	
8SDW420H	4' 20'	6982#	99	58	44	34	
8SDW424H	4' 24'	8132#	71	40	31	23	
8SDW616H	6' 16'	7812#	99	96	73	55	
8SDW620H	6' 20'	9437#	99	60	46	35	
8SDW624H	6' 24'	11062#	74	43	32	25	
8SDW626H	6' 26'	11874#	62	36	28	21	
8SDW628H	6' 28'	12638#	54	31	24	19	
8SDW816H	8' 16'	9794#	99	57	44	34	
8SDW820H	8' 20'	11892#	80	46	36	28	
8SDW824H	8' 24'	13990#	68	39	31	24	
8SDW826H	8' 26'	15040#	63	37	28	22	
8SDW828H	8' 28'	16022#	55	33	26	21	
8SDW1016H	10' 16'	11775#	102	59	46	36	
8SDW1020H	10' 20'	14348#	81	47	37	29	
8SDW1024H	10' 24'	16920#	68	40	31	25	
8SDW1026H	10' 26'	18206#	63	37	29	23	
8SDW1028H	10' 28'	19404#	55	33	26	21	

Spreader Selection



4-PIPE SPREADER SYSTEM
STANDARD CONFIGURATION
FOR 4', 6' & 8' HIGH UNITS
(TAPER OPTIONAL)



5-PIPE SPREADER SYSTEM
STANDARD FOR 10' HIGH SIDEWALLS
OPTIONAL FOR 8' HIGH SIDEWALLS
(TAPER OPTIONAL)

HPS HEAVY PIPE SPREADERS
For deep cut sidewalls (taper optional) (4) 8" schedule 80 pipes

MODEL	WIDTH	WEIGHT
HPS-4-24	24"	500#
HPS-4-30	30"	600#
HPS-4-36	36"	700#
HPS-4-42	42"	775#
HPS-4-48	48"	850#
HPS-4-54	54"	950#
HPS-4-60	60"	1025#
HPS-4-72	72"	1200#
HPS-4-84	84"	1400#
HPS-4-96	96"	1550#
HPS-4-108	108"	1700#
HPS-4-120	120"	1900#

5 PIPE SPREADER SYSTEM
Standard for 10' high sidewalls optional for 8' high sidewalls (taper optional) (5) 8" schedule 80 pipes

MODEL	WIDTH	WEIGHT
HPS-5-24	24"	465#
HPS-5-30	30"	572#
HPS-5-36	36"	680#
HPS-5-42	42"	790#
HPS-5-48	48"	900#
HPS-5-54	54"	1005#
HPS-5-60	60"	1115#
HPS-5-72	72"	1480#
HPS-5-84	84"	1670#
HPS-5-96	96"	1920#
HPS-5-108	108"	2130#
HPS-5-120	120"	2350#

AMERICAN SHORING INC.

1.800.407.4674
www.americanshoring.com

*** PSF Ratings and depths are based on short term exposure with excavation open a period of time equal to 24 hours or less. Consult manufacturer should long term exposure be required. Depths are based on A, B, C soil types are described in OSHA's 29 CFR Part 1926 Subpart P, October 31, 1989 with Type A not exceeding 25 PSF per foot of depth. Type B not exceeding 45 PSF per foot of depth. Type C-60 not exceeding 60 PSF per foot of depth and Type C-80 not exceeding 80 PSF per foot of depth. Determine actual soil pressures and consult Manufacturers Tabulated Data prior to each use.