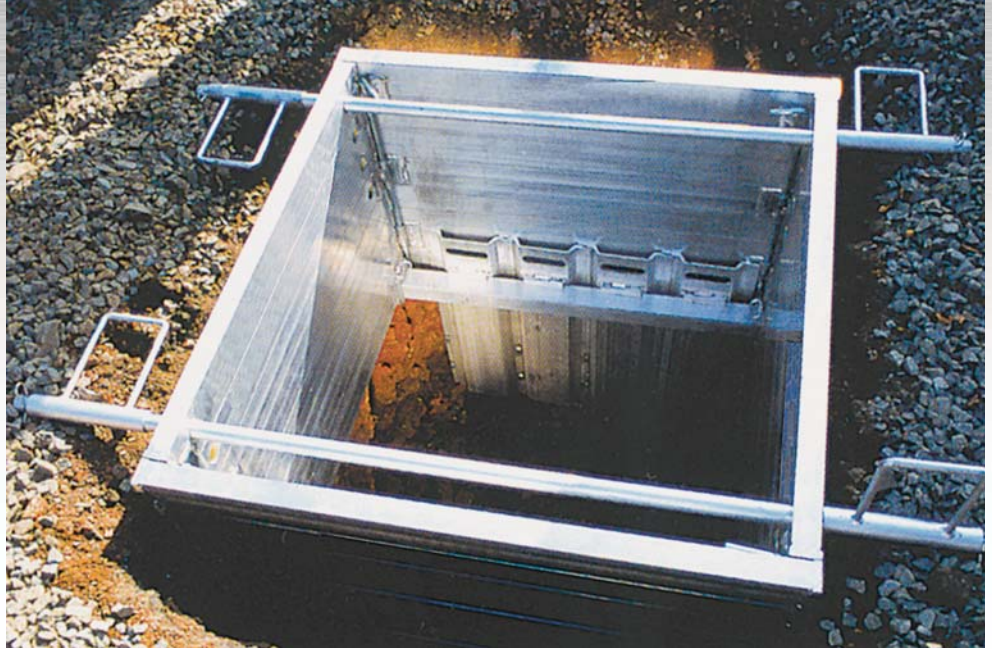


# Folding Gas Tap Box

- ★ Professional Engineer Certified
- ★ Light weight aluminum construction
- ★ Foam fill (optional)
- ★ Standard unit weighs only 175 pounds
- ★ Assemble and install with man power only
- ★ Folding feature allows for easy storage in a crowded utility van
- ★ Carrying bars double as "hangers" keeping box flush with top of trench
- ★ Sheeting panels extend below bottom of box to increase depth
- ★ Standard box yields 42" x 42" clear opening (60" x 60" is also available)
- ★ Working depth of 6.5 feet deep in "C" soil with sheeting panels fully extended
- ★ Custom sizes available



PINNED CORNERS ALLOW SIDES TO FOLD OUT FOR QUICK ASSEMBLY AND FOLD IN FOR STORAGE



MODEL	HEIGHT	WIDTH	LENGTH	WEIGHT
GT42	32"	42"	42"	175
GT60	32"	60"	60"	265

**A Non-Folding, One Piece Aluminum Sheeting Frame is Available!**